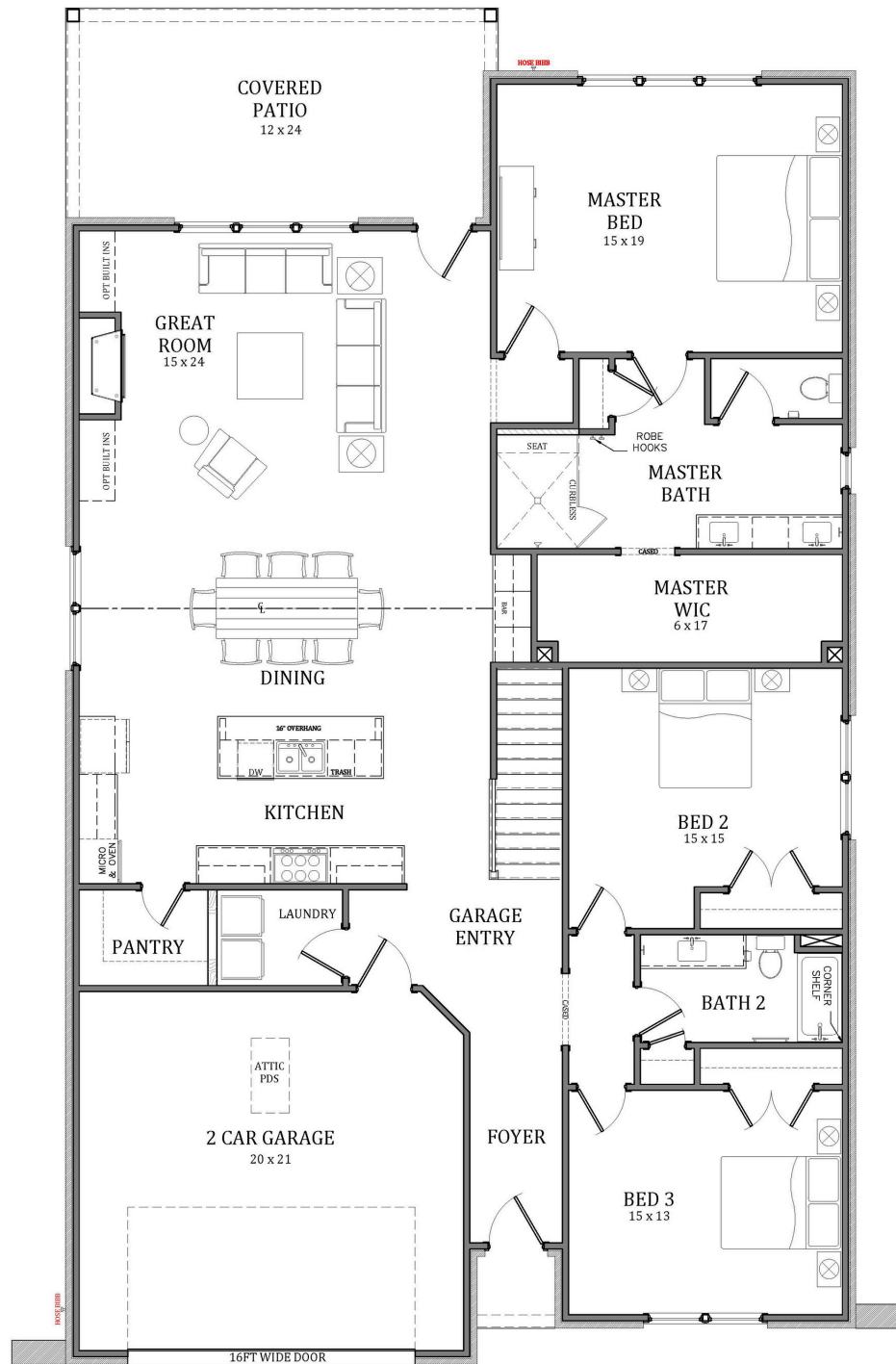


Windy Hill

4 BEDROOMS | 3 BATHROOMS | 2,842 SF



TOLAND
CONSTRUCTION

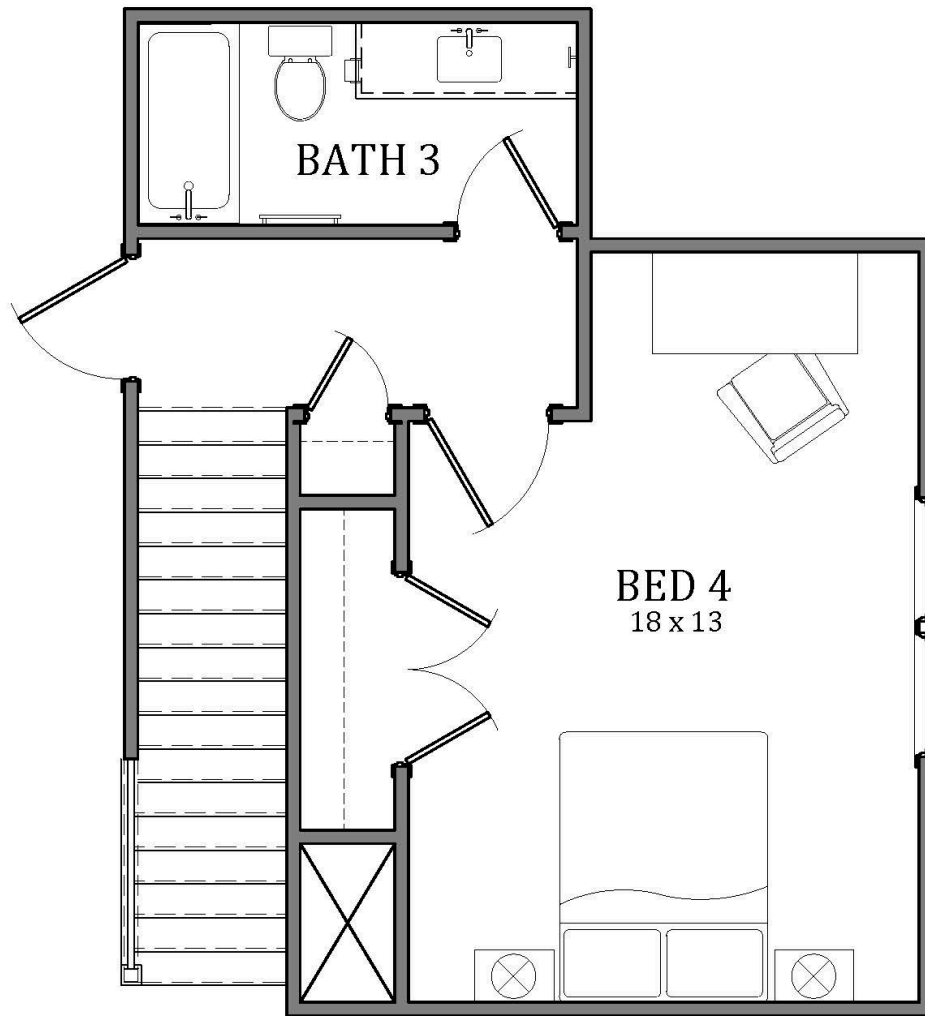


Windy Hill

First Floor - 2,457 SF

Second Floor - 385 SF

Total - 2,842 SF



TOLAND
CONSTRUCTION

Windy Hill

First Floor - 2,457 SF
Second Floor - 385 SF
Total - 2,842 SF