



Spec Homes Available for Purchase

Lot 1 – \$724,900

- Club
- 4 bed / 3 bath
- Flex Room
- 10' & 12' Ceilings
- Freestanding Tub
- Landscape Lighting
- 2,755 SF
- Ready NOW!

Lot 2 – \$749,900

- Sullivan
- 4 bed / 3 bath
- Loft
- 10' & 12' Ceilings
- Two Fireplaces
- Freestanding Tub
- 3,000 SF
- Ready NOW!

Lot 4 – \$734,900

- Windy Hill
- 4 bed / 3 bath
- Butler's Pantry
- 10' Ceilings
- Cast Stone Fireplace
- Butler's Pantry
- 2,842 SF
- Ready NOW!

Lot 6 – \$759,900

- Sullivan
- 4 bed / 3 bath
- Loft
- 10' & 12' Ceilings
- Two Fireplaces
- Freestanding Tub
- 3,000 SF
- Ready February

Lot 7 – \$799,900

- Asheton
- 4 bed / 3.5 bath
- Formal & Casual Dining
- 10' & 12' Ceilings
- Two Fireplaces
- Family Entrance
- 3,181 SF
- Ready March

Lot 8 – \$769,900

- Glenn
- 4 bed / 3 bath
- One Story
- 10' Ceilings
- Cast Stone Fireplace
- Butler's Pantry
- 2,852 SF
- Ready April



www.TolandConstruction.com

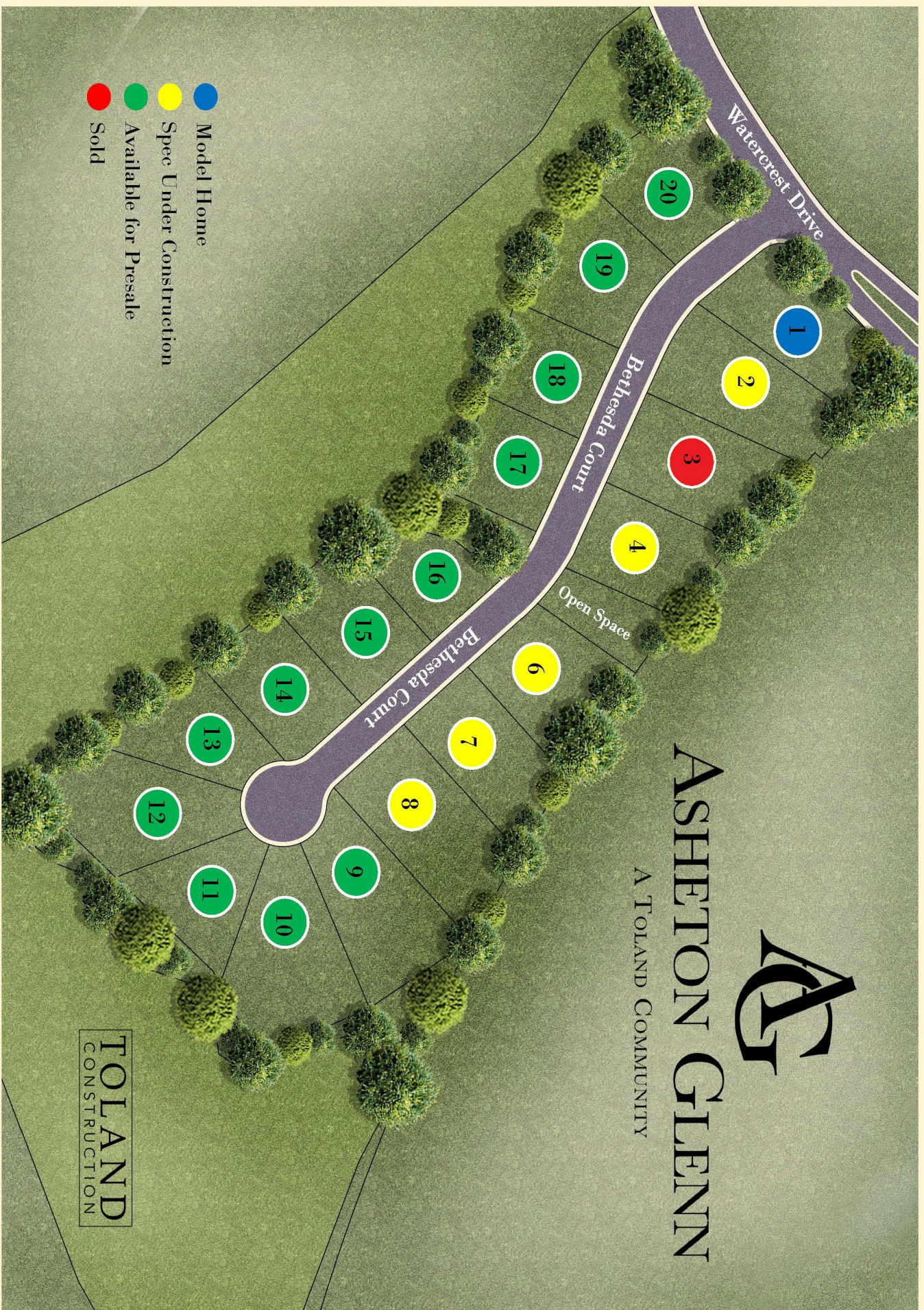
Pricing is subject to change at anytime without notice.



ASHETON GLENN

A TOLAND COMMUNITY

- Model Home
- Spec Under Construction
- Available for Presale
- Sold



TOLAND
CONSTRUCTION



ASHETON GLENN

A TOLAND COMMUNITY

Floorplan	Bed	Bath	Square Feet	Stories	Base Price
Windsor	3	2	2,150 - 2,160	One	\$599,900
Redbud	3	3	2,226	One	TBD
Azalea	3	2	2,241	One	\$619,900
Cook	3 - 4	2.5 - 3	2,450 - 3,126	One or Two	\$649,900 - \$729,900
Rogers	4	3	2,495	Two	\$659,900
Club	4 - 5	3 - 5	2,755 - 3,813	Two	\$689,900 - \$889,900
Sanders	3	3	2,778	Two	\$689,900
Windy Hill	4	3	2,842	Two	\$699,900
Glenn	4	3	2,852	One	\$729,900
Sullivan	4	3	2,926 - 3,009	Two	\$724,900 - \$735,850
Aspen	4	3	3,031	Two	\$724,900
Asheton	4	3.5	3,181	Two	\$739,900
Slagle	4	4.5	3,879	Two	\$949,900
Sugar Creek	5	5.5	4,480	Two	\$1,019,900

1. Pick your lot. 2. Pick your plan. 3. Pick your finishes!

Check out our website to see buildable floorplans.

Included Features at Asheton Glenn Auburn, Alabama

Distinctive Exteriors

- Slab Foundations
- Low Maintenance 4-Sides Brick
- Architectural Shingles w/ Limited Lifetime Warranty
- Durable Fiberglass Front Door
- Low Maintenance and Energy Efficient Single Hung Vinyl Windows
- Large Rear Covered Porches
- Recessed Can Lights & Ceiling Fan on Rear Porch
- Garage Doors w/ Wi-Fi Enabled Opener, Exterior Keypad and Remotes

Interior Features

- 10' smooth ceilings first floor and 9' on the second
- 8' doors on the first and 6'8" doors on the second
- 5" Engineered Hardwood in the Foyer, Kitchen, Dining, Great Room, and all first floor bedrooms
- Stained Oak Stair Treads
- 42" Gas Fireplace w/ Mantel and Surround
- 445 Casing Picture Framed on All Windows & Doors
- 7.25" Crown Molding in the Foyer, Main Level Halls, Kitchen, Dining, Great Room, Powder Bath, Master Bedroom, Walk-in Pantry, and Laundry
- 7.25" Baseboards on first floor, 5.25" on the second
- Ceiling Fans in Great Room and All Bedrooms

Designer Kitchens

- 42" Cabinets w/ Slow Close Doors & Drawers
- Decorative Wood Range Hood
- Tile Backsplash
- Garbage Disposal
- Granite Countertops
- Undermount Stainless Steel Sink
- Large Islands
- Undercabinet LED Lighting
- Whirlpool Appliance Collection – 36" Gas Cooktop, 30" Single Wall Oven, Microwave, 24" Dishwasher

Superior Framing

- Engineered Floor Joist System
- 16" Stud Spacing
- Huber Blue Plus Subfloor Panels

Luxurious Master Bath

- Oversized Shower w/ Tile Walls, Floor, Shampoo Niche, Bench Seat, and Frameless Glass Enclosure
- Raised Height Vanities w/ Granite Countertops
- Delta Woodhurst 8" Vanity Faucets and Shower Trim
- Ceramic Tile Floors
- Elongated, Comfort Height Toilets
- Delta Woodhurst Bath Hardware

Elegant Secondary Bathrooms

- Steel Enameled Tubs w/ Tile Walls (first floor)
- Fiberglass Tubs w/ Fiberglass Walls (second floor)
- Raised Height Vanities w/ Granite Countertops
- Delta Woodhurst 4" Vanity Faucets and Shower Trim
- Ceramic Tile Floors
- Elongated, Comfort Height Toilets
- Delta Woodhurst Bath Hardware

Home Performance/Energy Efficiency

- Energy Efficient Carrier HVAC – Single System w/ Electronic Zoning
- Programmable Thermostat, Wi-Fi Ready
- Spray Foam Insulation in Attic (2 Story Plans), Sound Insulation Interior Walls & Subfloor
- Tankless Gas Water Heater (2 Story Plans)
- Schluter Kerdi Waterproofing in Showers
- Smoke & Carbon Monoxide Detectors
- Gas Cooking and Fireplace
- Security Prewire at Garage Door
- Network Panel, RG6 and CAT5 in Great Room, All Bedrooms, Bonus, Office (Per Plan)
- EV Charger Pre-Wire in Garage

The Toland Experience

- 1 year warranty on all work and materials
- Personal meeting with design team to take you through the selections process all in one location
- Bi-monthly updates on the progress of your home
- Milestone meetings with your construction team

Lots	Premium & Foundation Extras	Size
<i>1</i>	<i>Club - For Sale / Model</i>	<i>.49 acres</i>
<i>2</i>	<i>Sullivan - For Sale</i>	<i>.5 acres</i>
<i>3</i>	<i>Asheton - SOLD</i>	<i>.48 acres</i>
<i>4</i>	<i>Windy Hill – For Sale</i>	<i>.39 acres</i>
<i>6</i>	<i>Sullivan – For Sale</i>	<i>.45 acres</i>
<i>7</i>	<i>Asheton – Coming Soon</i>	<i>.43 acres</i>
<i>8</i>	<i>Glenn – Coming Soon</i>	<i>.56 acres</i>
<i>9</i>	<i>\$15,000</i>	<i>.52 acres</i>
<i>10</i>	<i>\$42K - \$48K</i>	<i>.58 acres</i>
<i>11</i>	<i>\$42K - \$48K</i>	<i>.36 acres</i>
<i>12</i>	<i>\$42K - \$48K</i>	<i>.52 acres</i>
<i>13</i>	<i>\$42K - \$48K</i>	<i>.37 acres</i>
<i>14</i>	<i>\$42K - \$48K</i>	<i>.39 acres</i>
<i>15</i>	<i>\$45K - \$55K</i>	<i>.4 acres</i>
<i>16</i>	<i>\$10,000</i>	<i>.31 acres</i>
<i>17</i>	<i>\$15,000</i>	<i>.34 acres</i>
<i>18</i>	<i>\$15,000</i>	<i>.34 acres</i>
<i>19</i>	<i>\$40K - \$50K</i>	<i>.47 acres</i>
<i>20</i>	<i>See Builder</i>	<i>.46 acres</i>

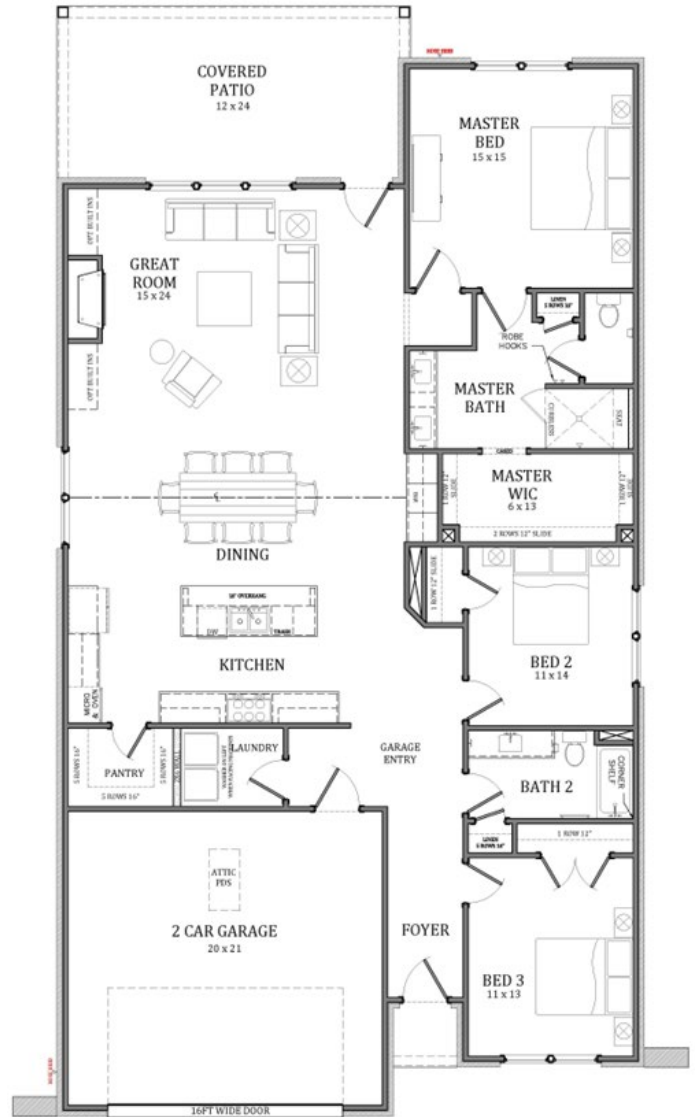
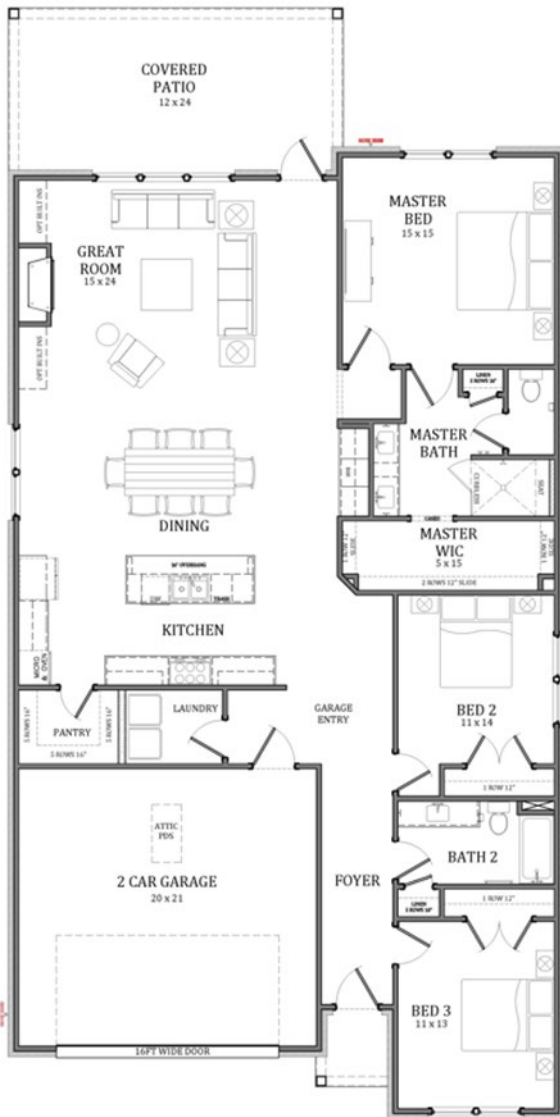
TOLAND CONSTRUCTION



Windsor B



Windsor C

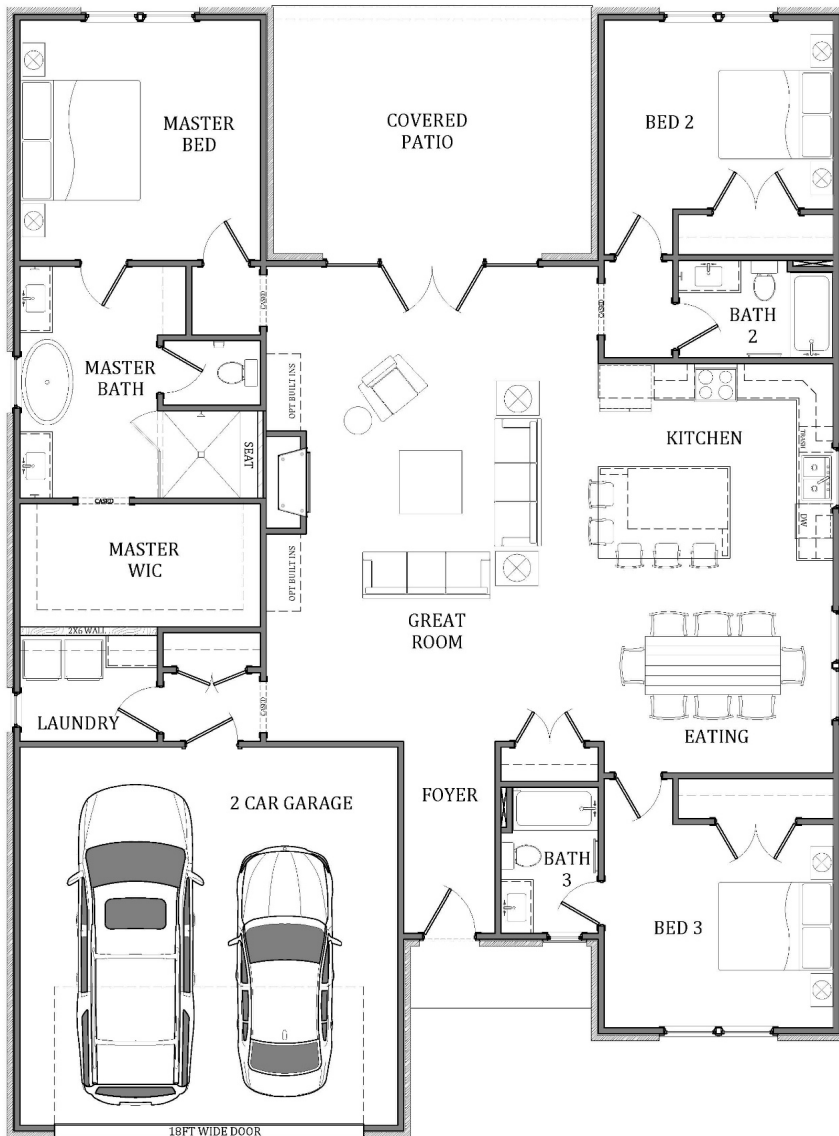


2 Elevation Options | 3 Bedrooms / 2 Bathrooms | Single Story | 2,150 – 2,160 SF

TOLAND CONSTRUCTION



Redbud



3 Bedrooms / 3 Bathrooms | Single Story | 2,226 SF

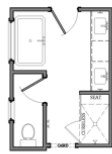
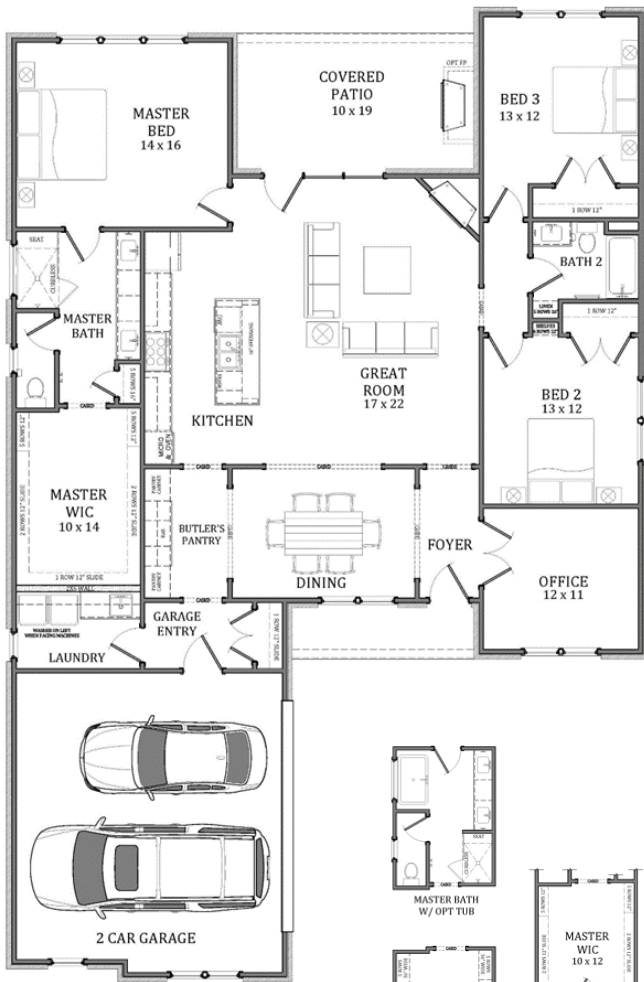
TOLAND CONSTRUCTION



Azalea B



Azalea C



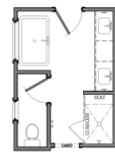
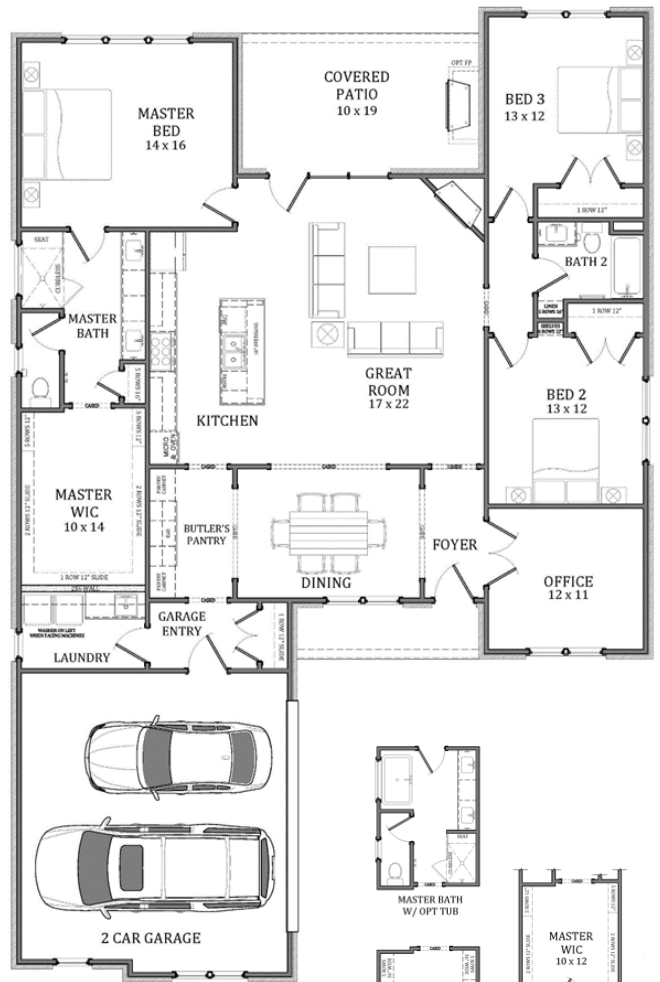
MASTER BATH
W/ OPT TUB



MASTER WIC
OPT. BUILT INS
(STANDARD LAUNDRY
CONFIGURATION)



OPT. LAUNDRY
WITH DOOR TO
MASTER CLOSET



MASTER BATH
W/ OPT TUB



MASTER WIC
OPT. BUILT INS
(STANDARD LAUNDRY
CONFIGURATION)



OPT. LAUNDRY
WITH DOOR TO
MASTER CLOSET

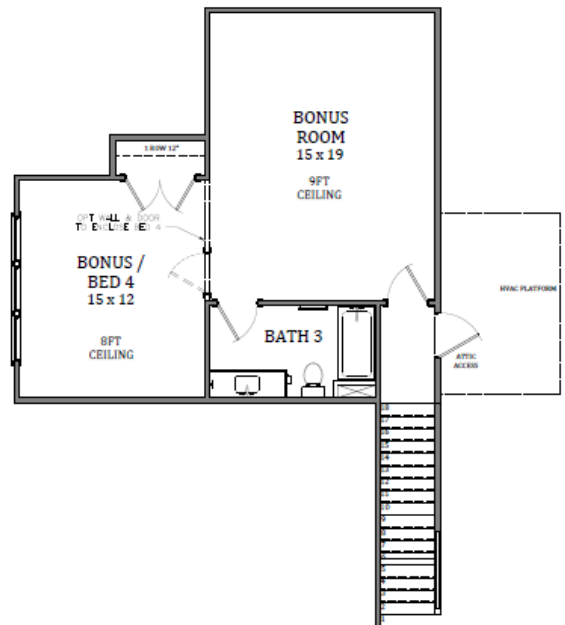
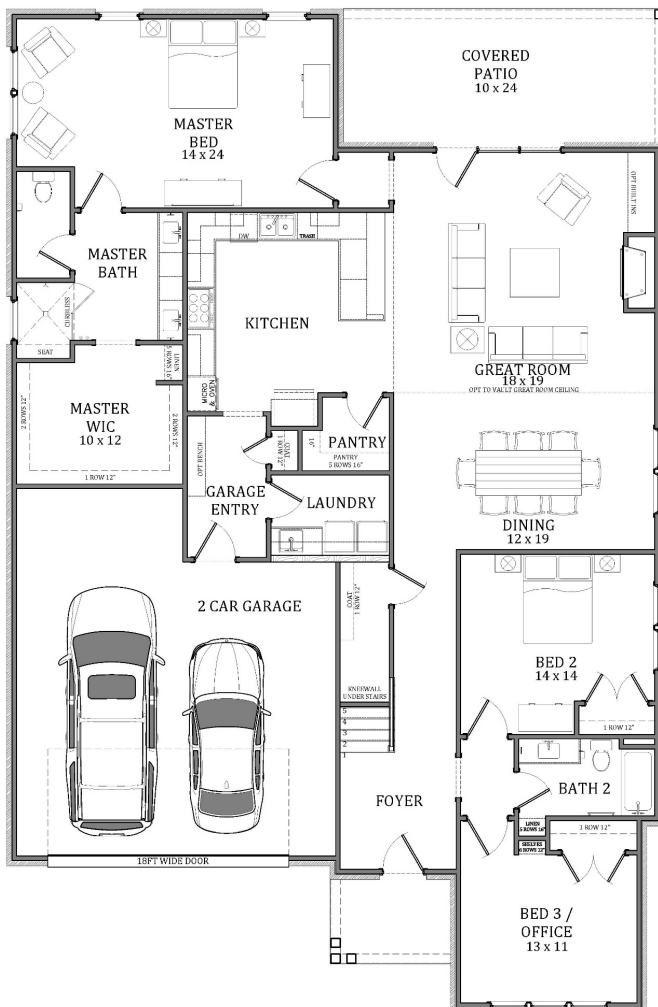
A hand-drawn architectural sketch of a ranch-style house. The house features a gabled roof with a smaller gable over the front entrance. A large two-car garage is on the left side. A front door with a transom window is centered under the main gable. To the right of the front door is a large multi-paned window. A second dormer window is shown on the roof, labeled "2ND FLOOR OPTION" with an arrow pointing to it. The sketch includes landscaping like bushes and a lawn.

[illegible]

3 Bedrooms / 2.5 Bathrooms | Single Story | 2,450 SF

A hand-drawn architectural sketch of a single-story house with a gabled roof. The house features a two-car garage on the left side, a central front door with a small porch, and a large multi-paned window on the right. A handwritten note '2ND FLOOR OPTION' with an arrow points to a dormer window on the roof. The drawing is done in black ink on a white background, with some shading to indicate depth.

**Optional Second Story Bedroom,
Bonus Room & 3rd Bathroom
Adds 676 SF – \$80,000**

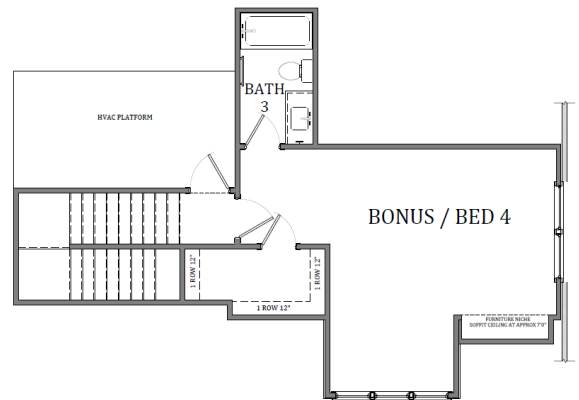
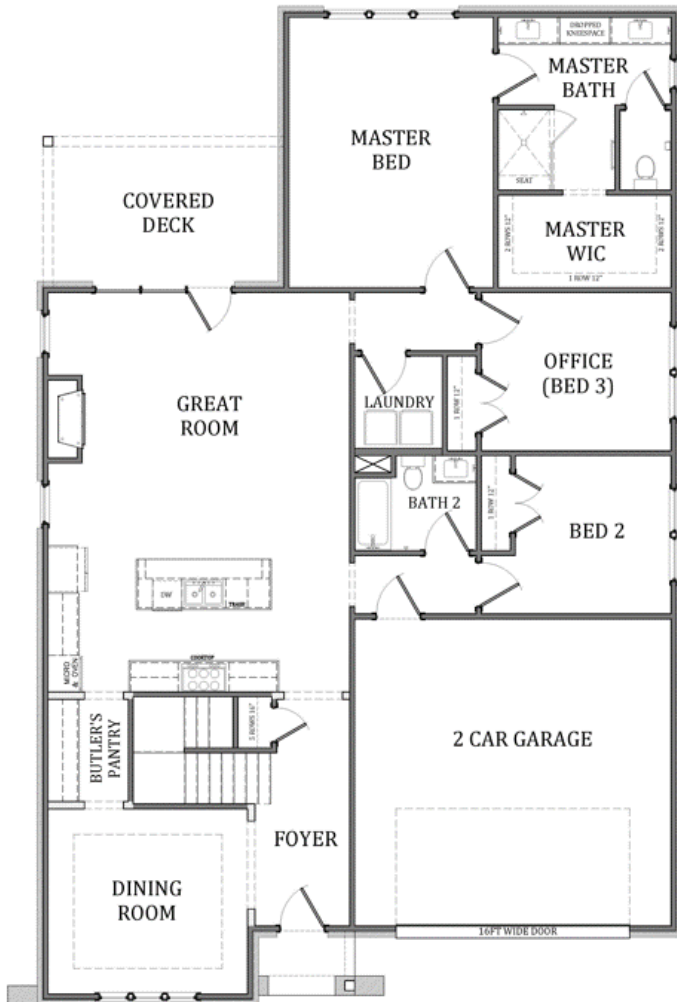


4 Bedrooms / 3 Bathrooms | Bonus | Two Story | 3,126 SF

TOLAND CONSTRUCTION



Rogers

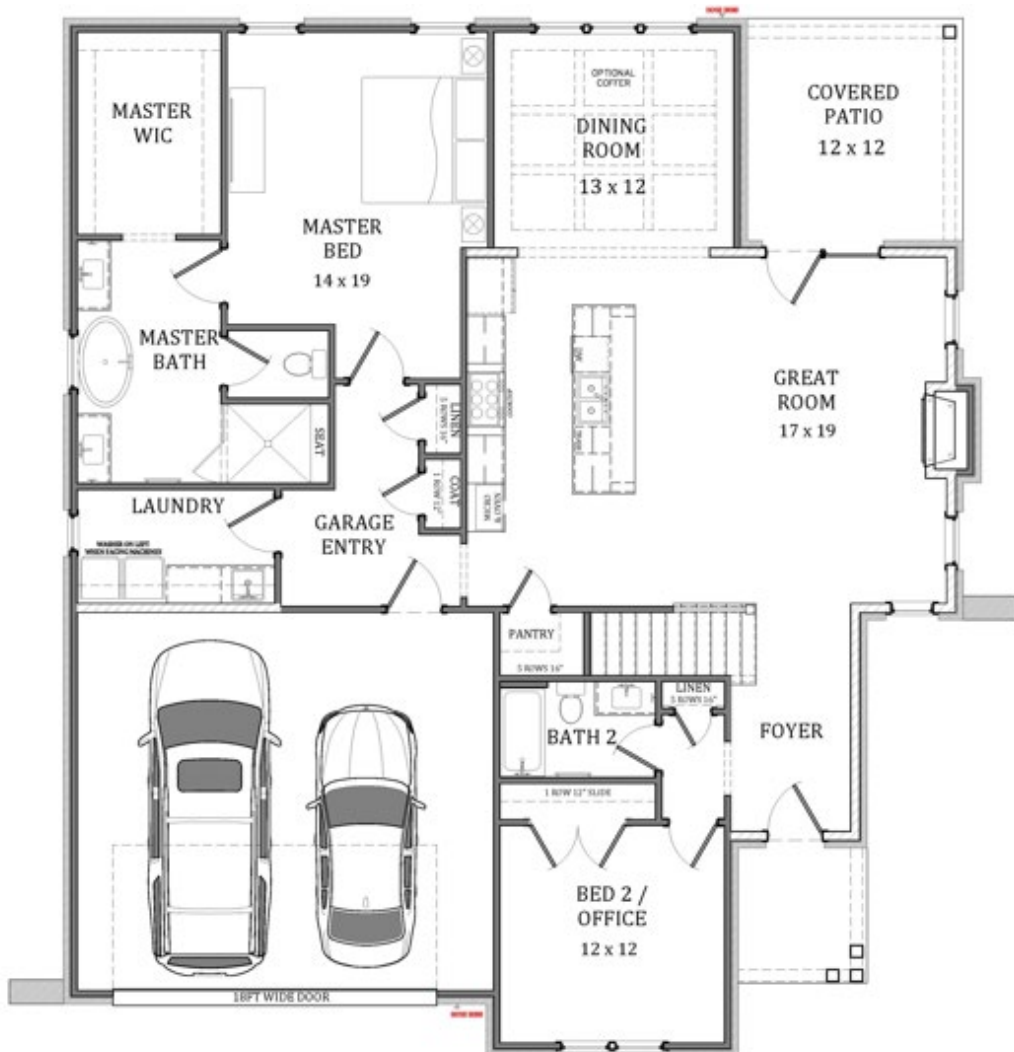


4 Bedrooms / 3 Bathrooms | Two Story | 2,495 SF

TOLAND CONSTRUCTION



Club "2755"

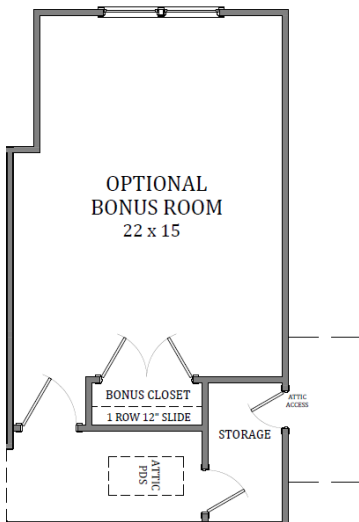


4 Bedrooms / 3 Bathrooms | Two Story | 2,755 SF

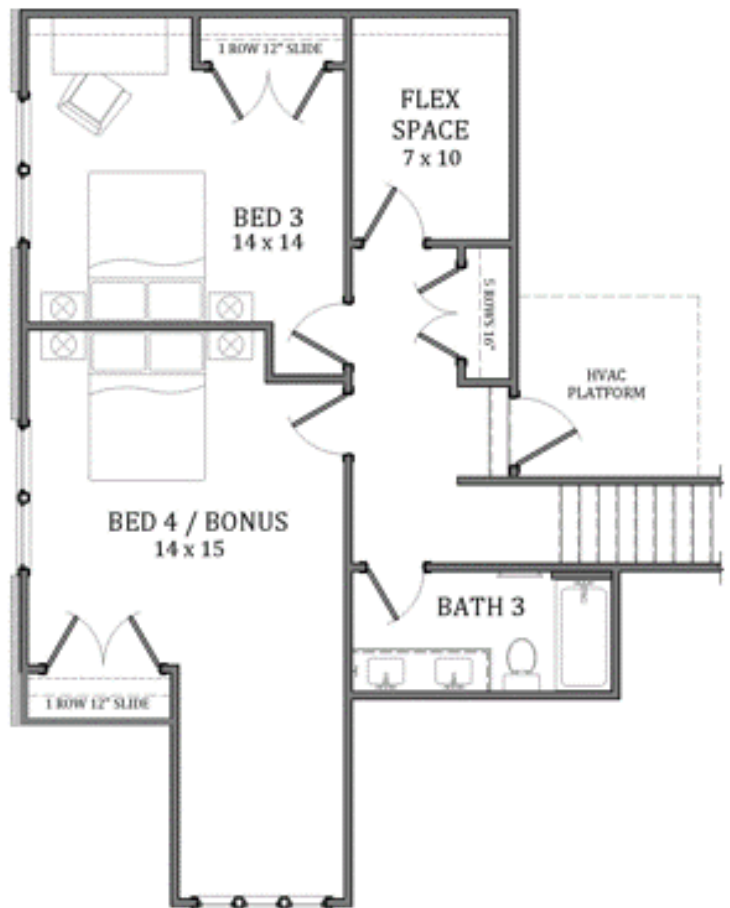
TOLAND CONSTRUCTION



Club "2755"



Optional Second Story Bonus
Room/Bedroom
Adds 425 SF – \$40,000



4 Bedrooms / 3 Bathrooms | Two Story | 2,755 SF

TOLAND CONSTRUCTION



Sanders



3 Bedrooms / 3 Bathrooms | Two Story | 2,778 SF

TOLAND CONSTRUCTION



Windy Hill

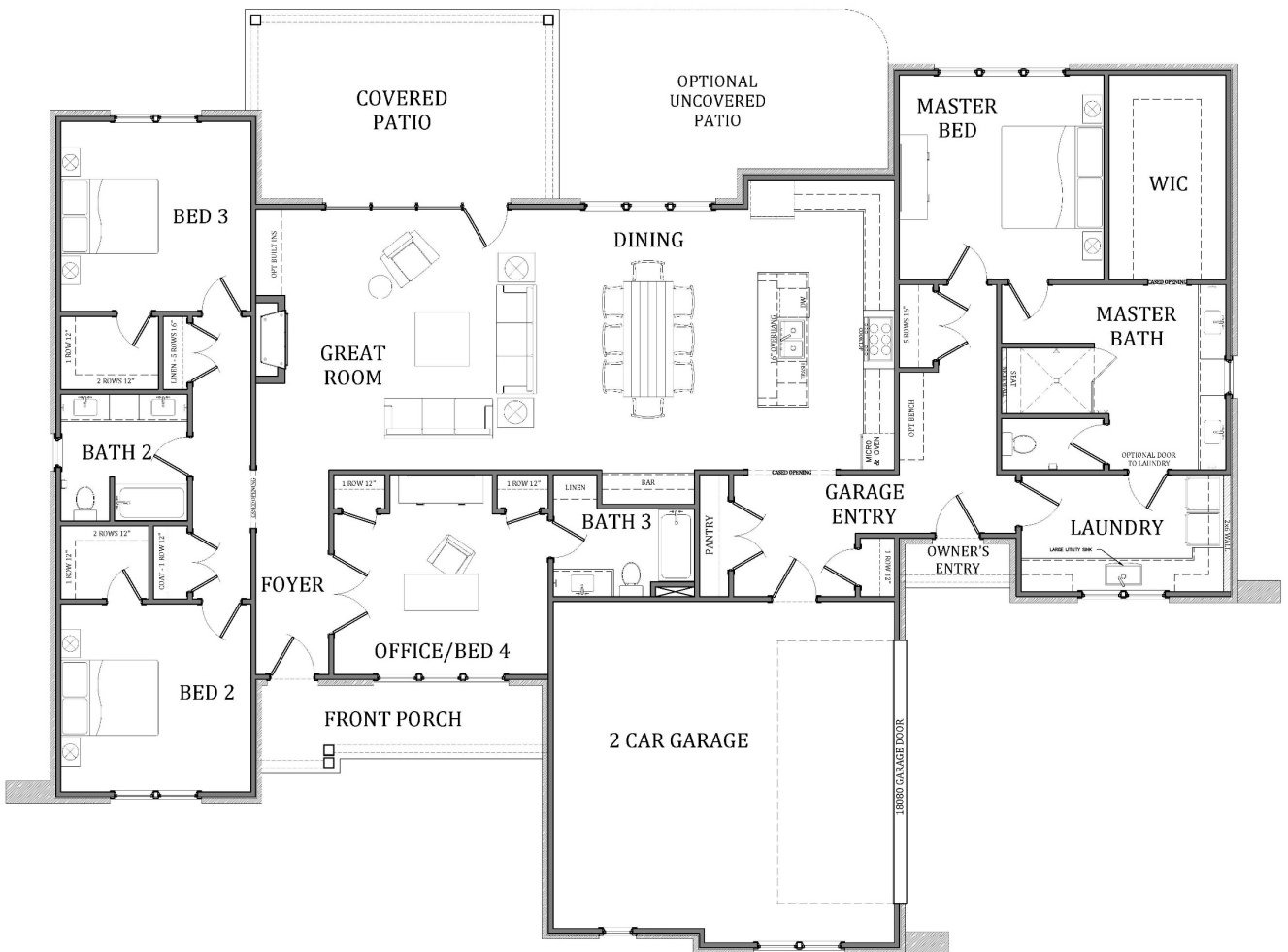


4 Bedrooms / 3 Bathrooms | Two Story | 2,842 SF

TOLAND CONSTRUCTION



Glenn

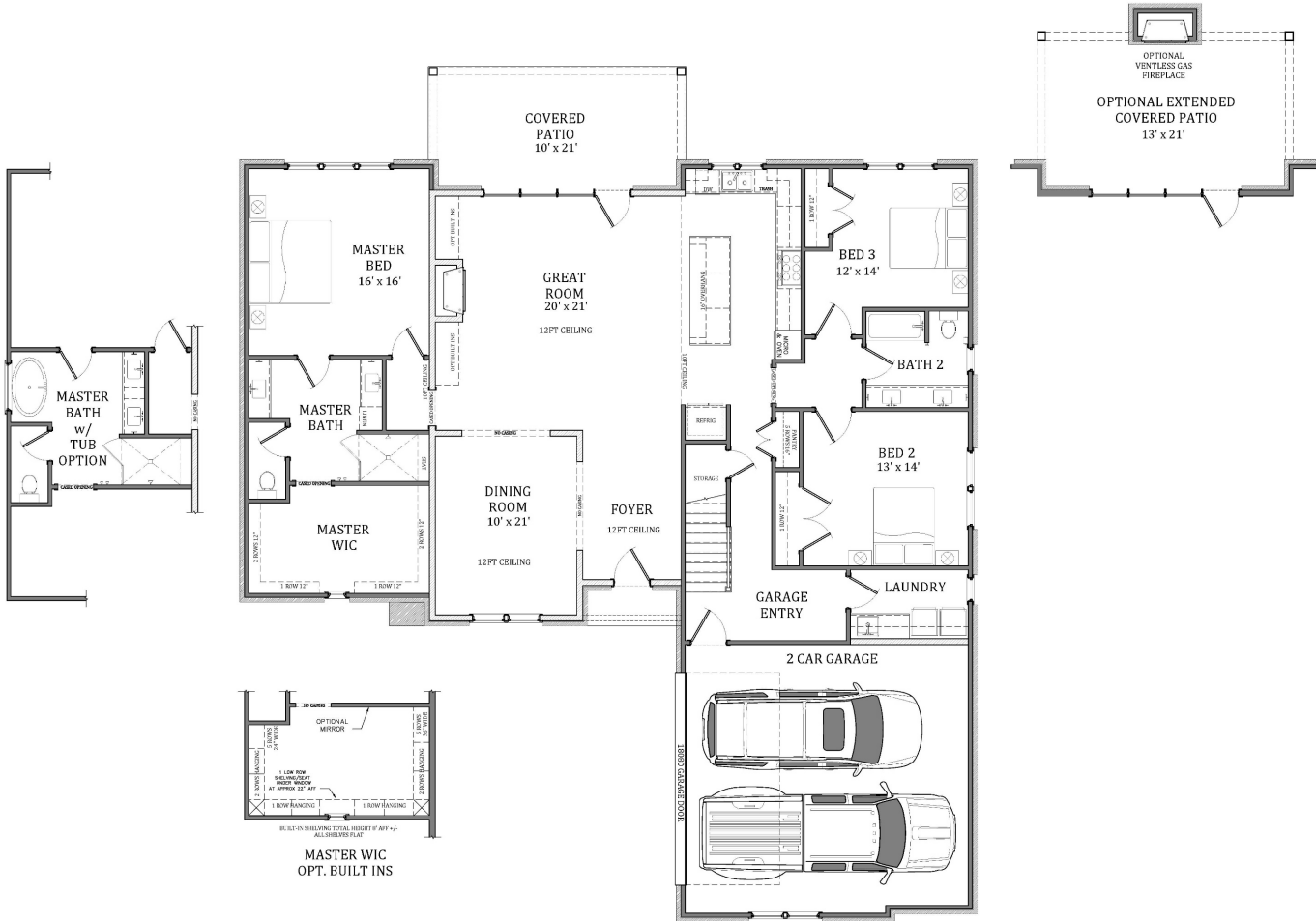


4 Bedrooms / 3 Bathrooms | One Story | 2,852 SF

TOLAND CONSTRUCTION



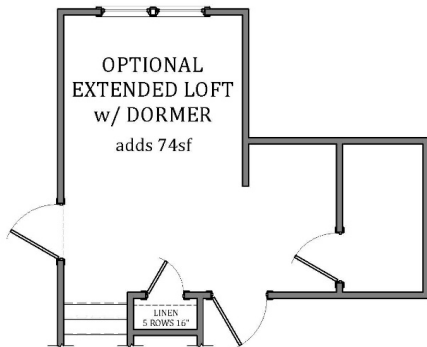
Sullivan



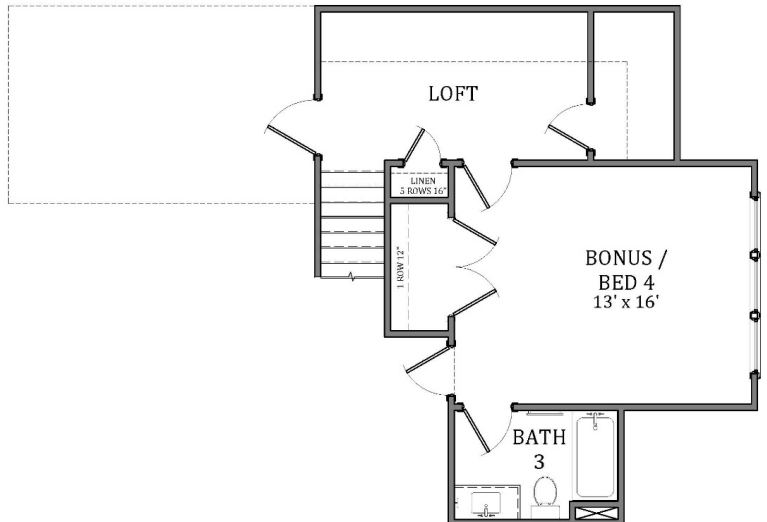
4 Bedrooms / 3 Bathrooms | Loft | Two Story | 2,926 SF



Sullivan



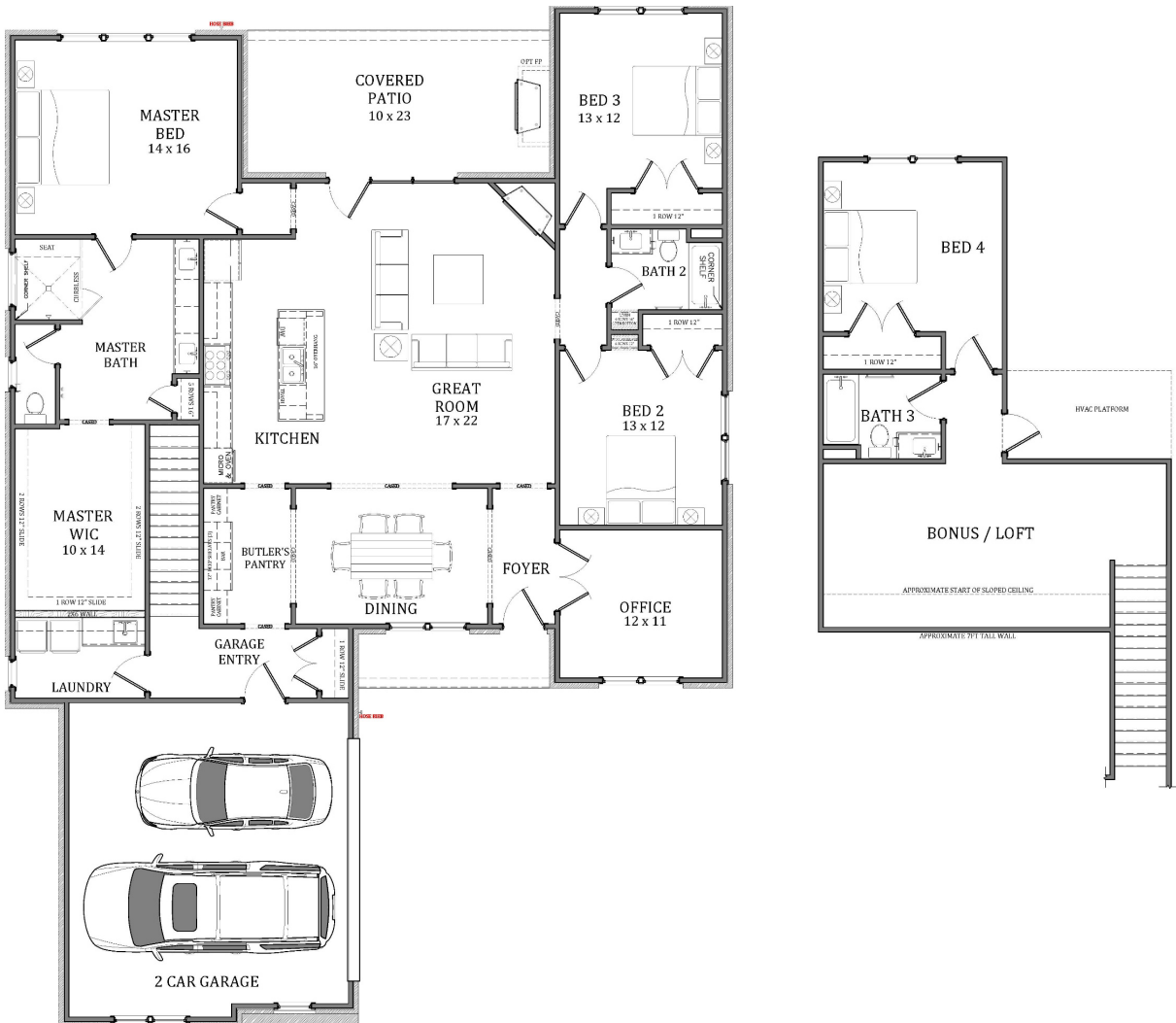
Optional Extended Loft
Adds 74 SF – \$10,000



TOLAND CONSTRUCTION



Aspen

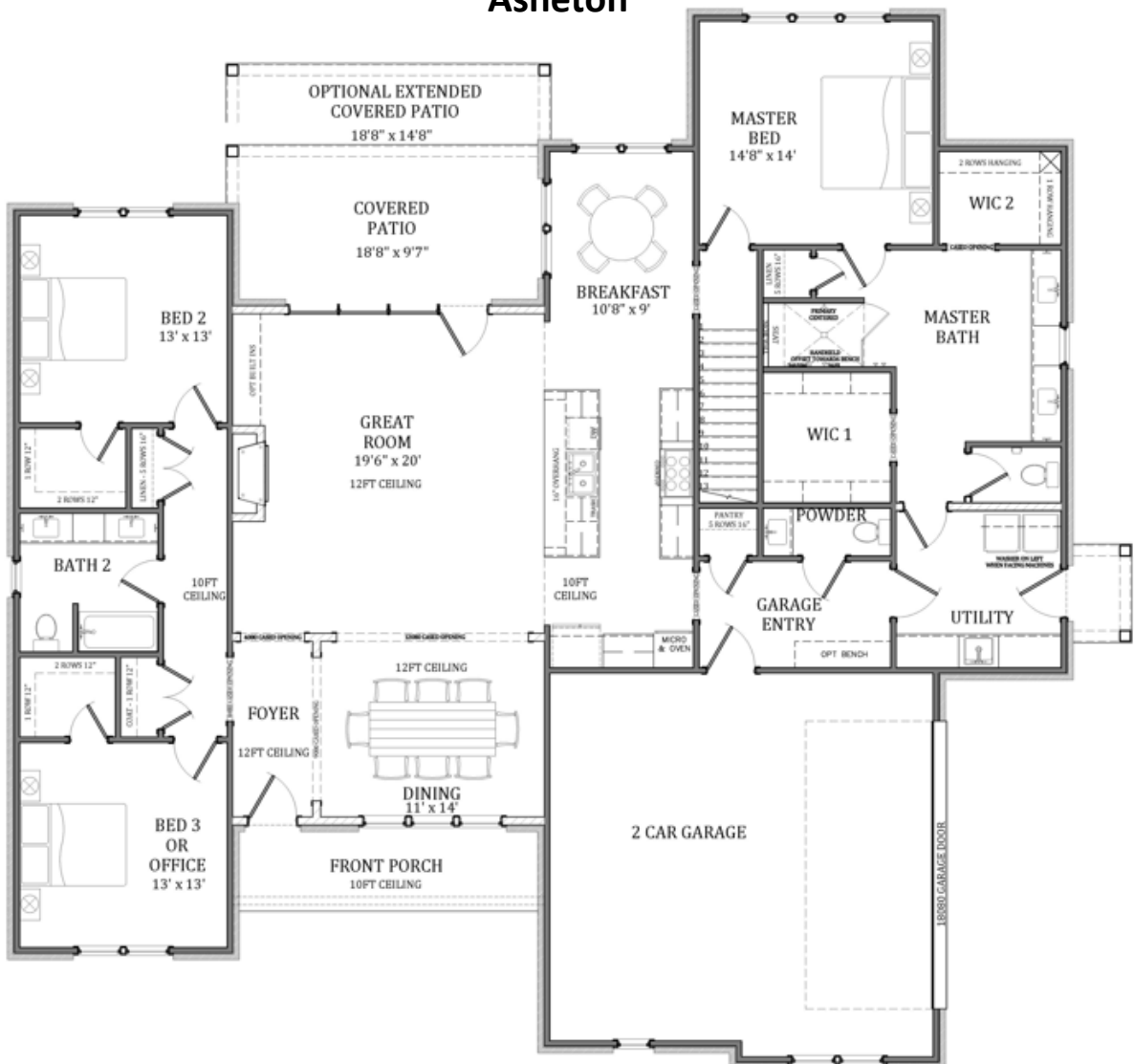


4 Bedrooms / 3 Bathrooms | Office | Bonus | Two Story | 3,031 SF

TOLAND CONSTRUCTION



Asheton

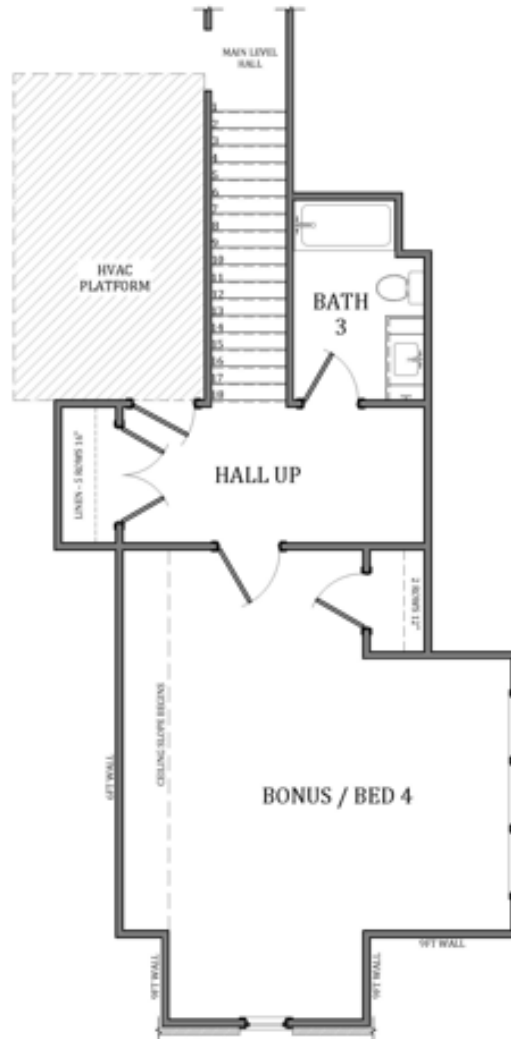


4 Bedrooms / 3.5 Bathrooms | Two Story | 3,181 SF

TOLAND CONSTRUCTION



Asheton



4 Bedrooms / 3.5 Bathrooms | Two Story | 3,181 SF

A black and white line drawing of a single-story house. The house features a gabled roof with a chimney on the left side. A dormer window is positioned on the right side of the roof. The front facade includes a central entrance door with a small porch, flanked by two windows. To the right of the entrance, there are two more windows. The house is surrounded by landscaping, including bushes and a lawn.

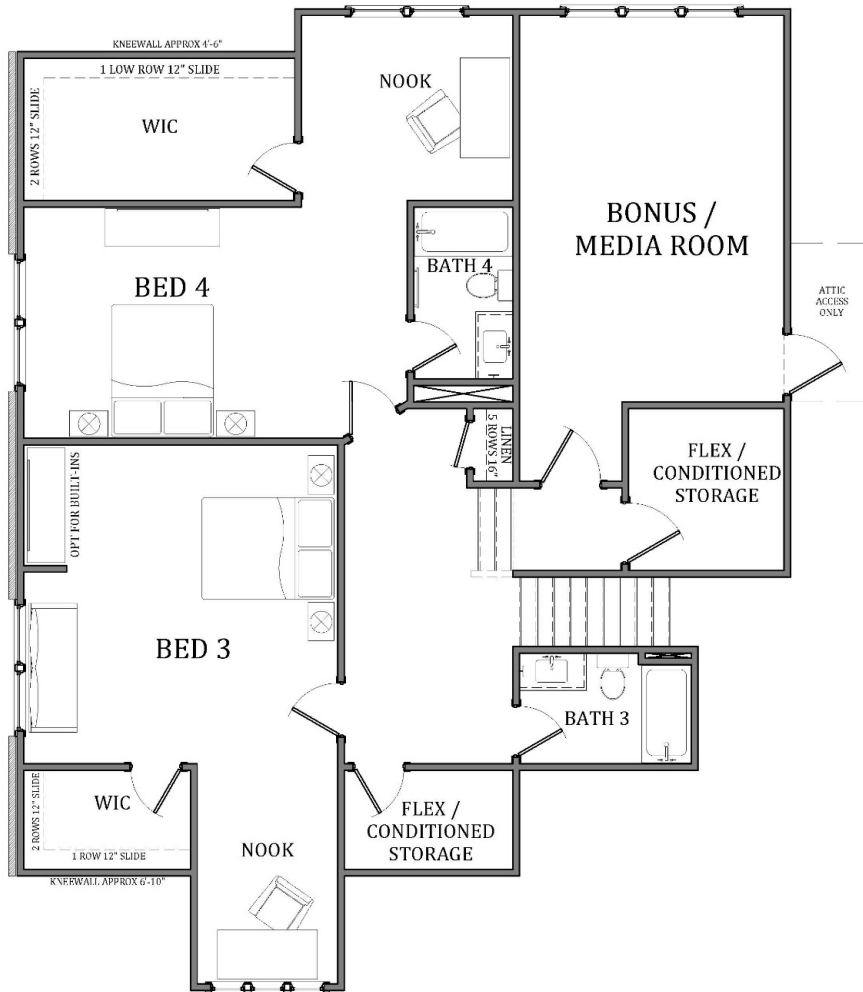
[illegible]

4 Bedrooms / 4 Bathrooms | Bonus | Two Story | 3,813 SF

TOLAND CONSTRUCTION

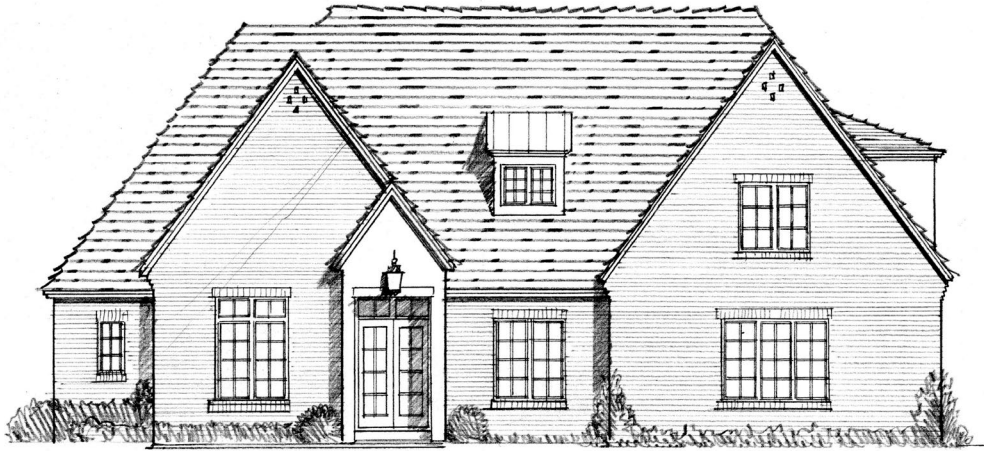


Club "XL"

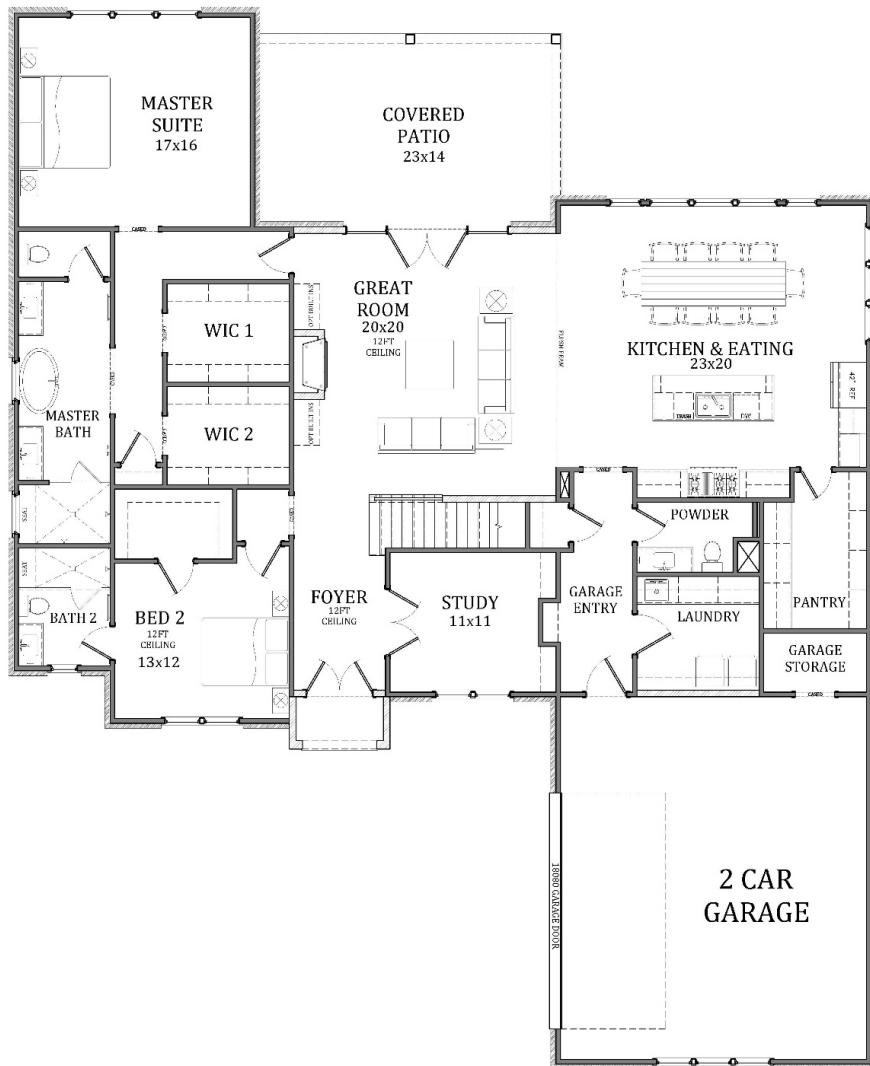


4 Bedrooms / 4 Bathrooms | Bonus | Two Story | 3,813 SF

TOLAND CONSTRUCTION

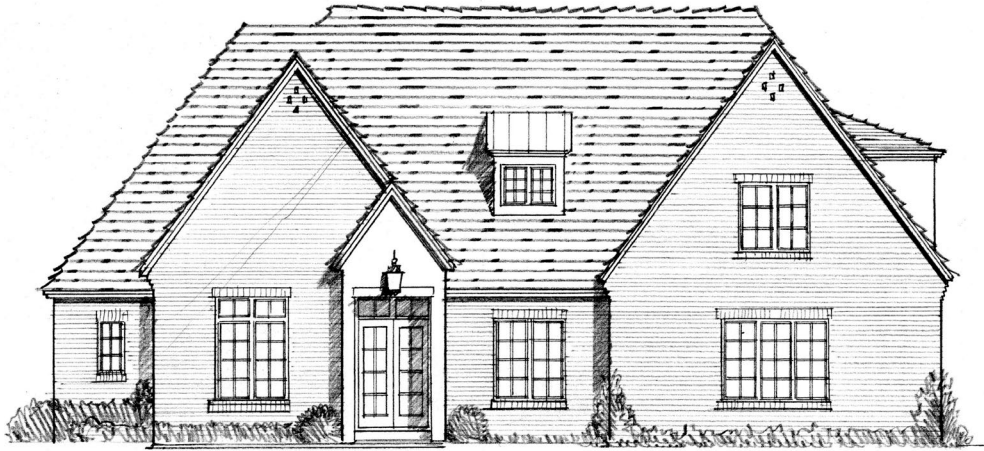


Slagle

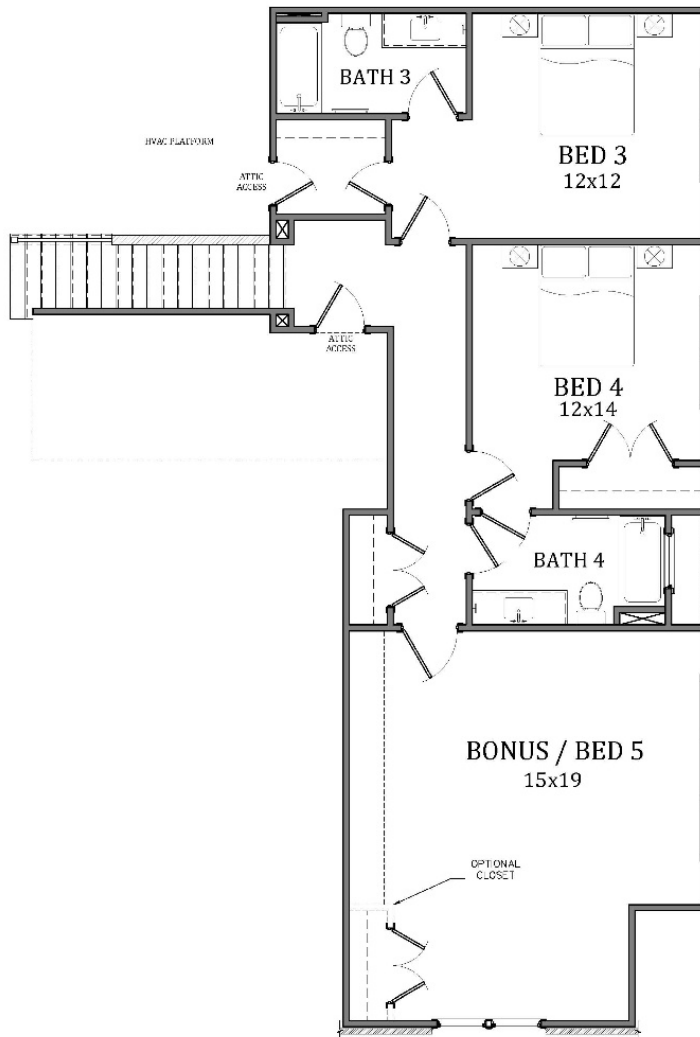


4 Bedrooms / 4.5 Bathrooms | Study | Bonus | Two Story | 3,879 SF

TOLAND CONSTRUCTION

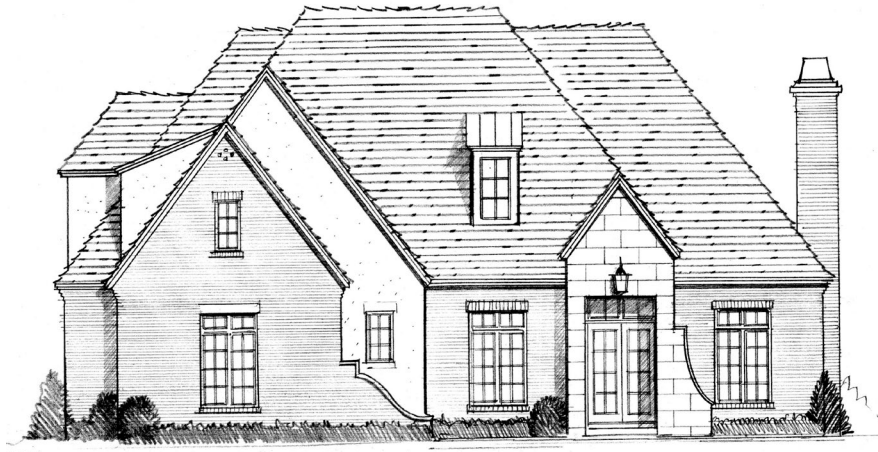


Slagle

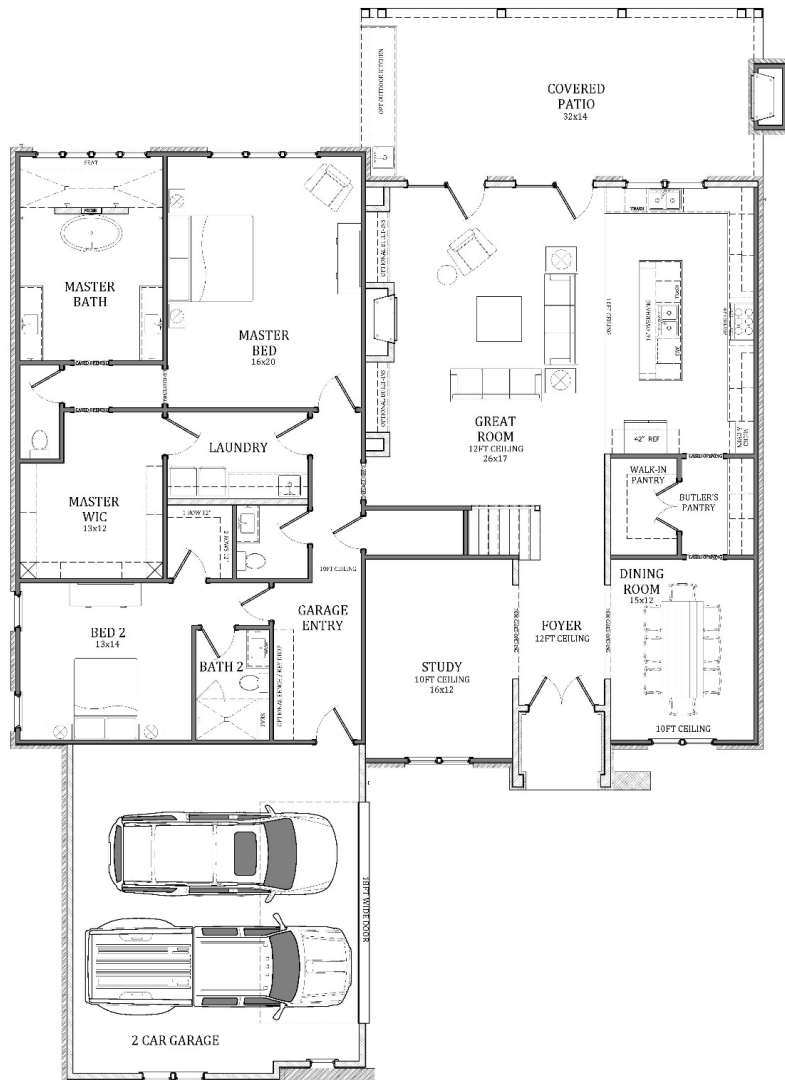


4 Bedrooms / 4.5 Bathrooms | Study | Bonus | Two Story | 3,879 SF

TOLAND CONSTRUCTION

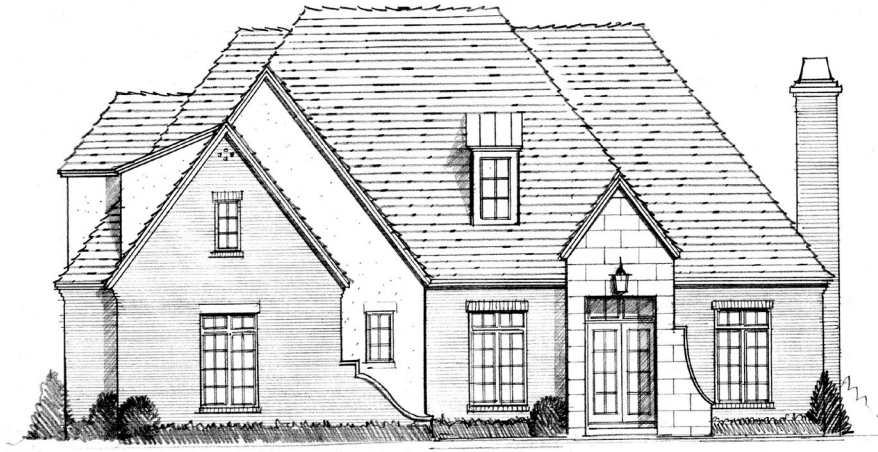


Sugar Creek

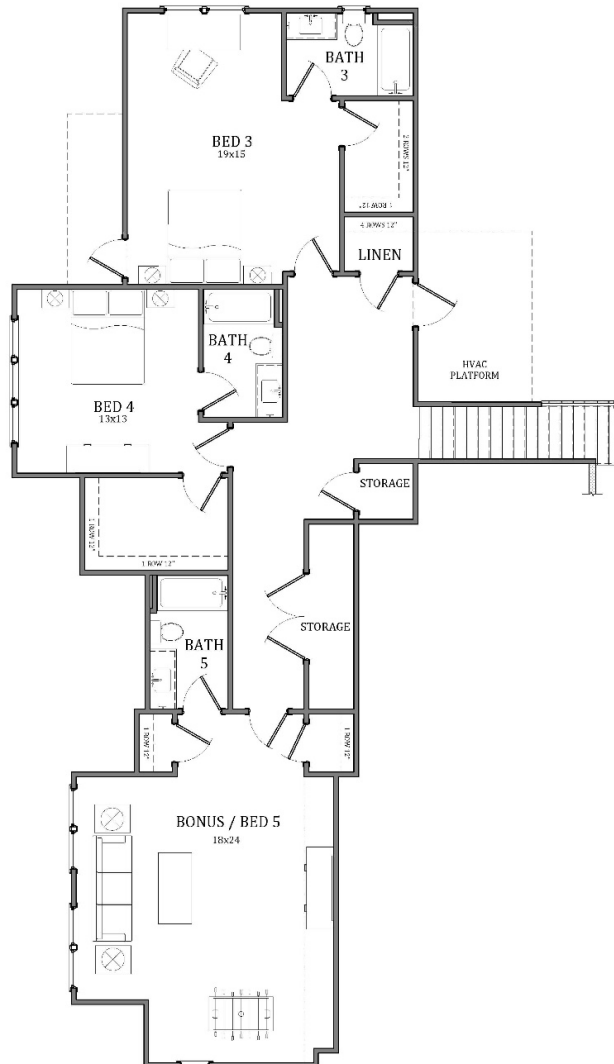


5 Bedrooms / 5.5 Bathrooms | Study | Two Story | 4,480 SF

TOLAND CONSTRUCTION



Sugar Creek



5 Bedrooms / 5.5 Bathrooms | Study | Two Story | 4,480 SF